

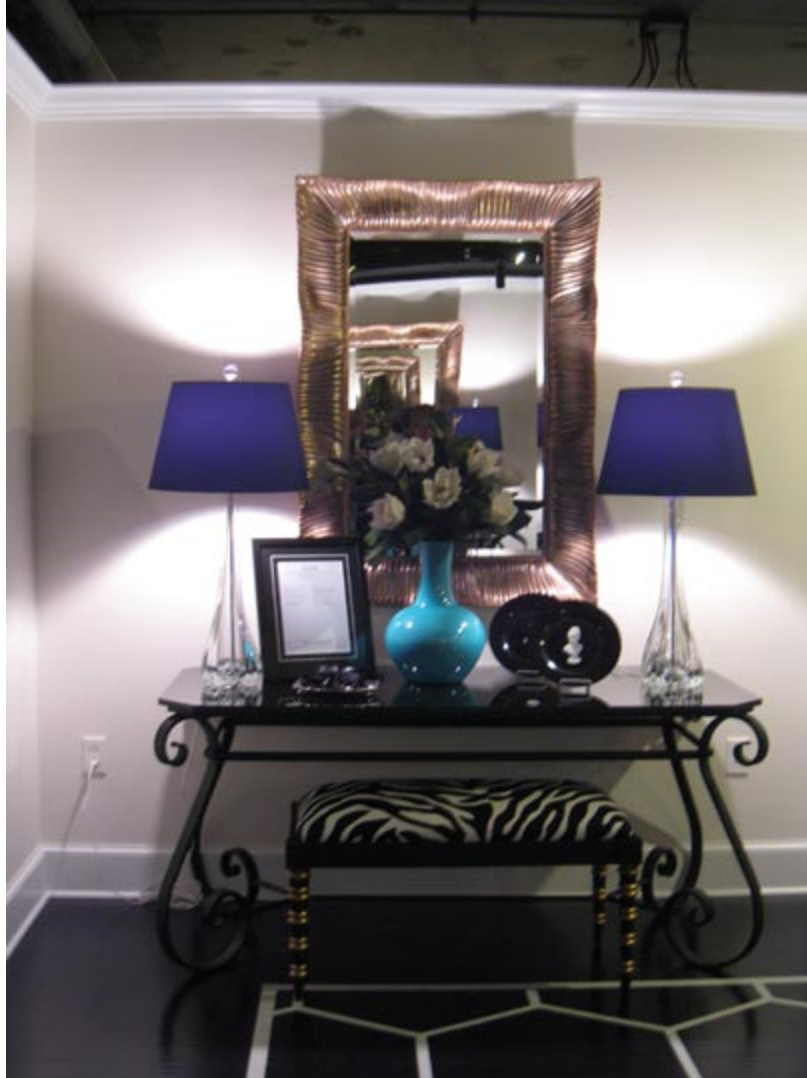
APARTMENT THERAPY

Washington Design Center's 2010 Design House

5 24 10



The Washington Design Center's 2010 Design House - Halls of Fame - opened this weekend after a fabulous fundraising gala on Thursday night. The new design house is located on the fifth floor of the Washington Design Center (WDC), an improvement over previous years because it allowed some of the featured designers to work with real windows and natural light. Though the WDC is primarily dedicated to the trade, the design house is open to the public and celebrates eight local Hall of Fame designers who each designed one room in the house.



The Foyer/Lobby pictured was designed by Kelley Proxmire, who envisioned the space as the Park Avenue home of a New York socialite, and a backdrop for big entertaining. Though the room certainly dwarfs many of the homes featured on *Apartment Therapy*, the space can nonetheless provide some design inspiration for those of us in smaller spaces.

The black, white, and turquoise design is graphic and glamorous, highlighting the impact a bold color can have on any space. The room features a painted floor rather than a rug, and the grand scale of both the furniture and accessories demonstrate the importance of sometimes thinking big. Oversized mirrors, lamps, and vases can work even in a small space, though the massive furniture is obviously not a possibility. This room also highlights the importance of assessing the utility of furniture pieces without focusing on their intended use; those lovely glass tables under the mirrors are actually dining tables that Proxmire decided to use as consoles instead.

If you want to see more of the Halls of Fame Design House, the Washington Design Center is located at 300 D St. SW, and the design house is open to the public

through December 4, 2010 (Monday to Friday 9am to 5pm, Saturday 10am to 3pm).
Best of all, admission is free. For more information, visit [DC Design Center](#).